

NMF-SPP1X2A1-SCU-M-1x2UPC
 NMF-SPP1X2A1-SCA-M-1x2APC
 NMF-SPP1X4A1-SCU-M-1x4UPC
 NMF-SPP1X4A1-SCA-M-1x4APC
 NMF-SPP1X8A1-SCU-M-1x8UPC
 NMF-SPP1X8A1-SCA-M-1x8APC
 NMF-SPP1X16A1-SCU-M-1x16UPC
 NMF-SPP1X16A1-SCA-M-1x16APC



NIKOMAX,

9/125

G657.A1, SC,

, 0.9

PLC(Planar Lightwave Circuit)

FTTx.

NIKOMAX,

1260 1650

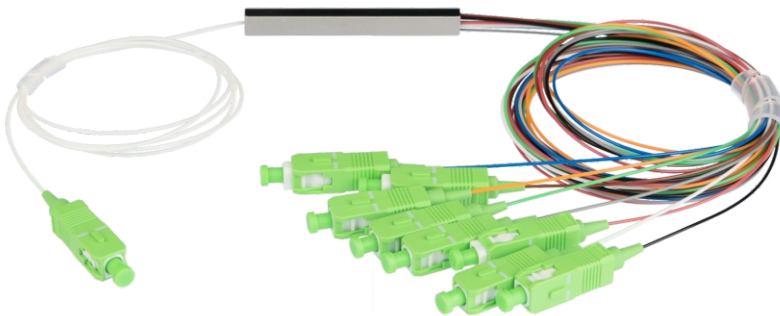
- 2, 4, 8, 16,

- UPC APC.

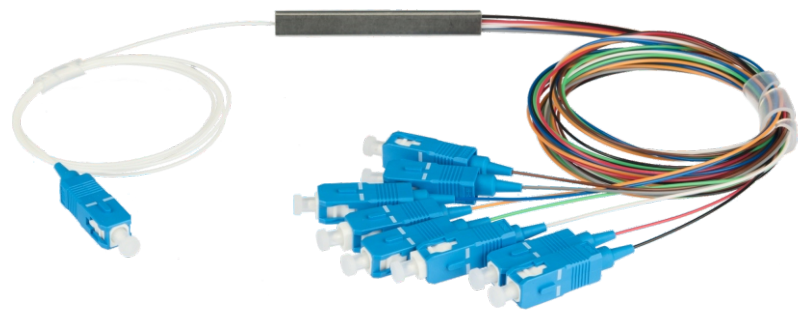
G. 657.A1.

LSZH

0.9



NMF-SPP1X8A1-SCA-M



NMF-SPP1X8A1-SCU-M

	1
	1

	NMF-SPP1X2A1-SCU-M	NMF-SPP1X2A1-SCA-M	NMF-SPP1X4A1-SCU-M	NMF-SPP1X4A1-SCA-M	NMF-SPP1X8A1-SCU-M	NMF-SPP1X8A1-SCA-M	NMF-SPP1X16A1-SCU-M	NMF-SPP1X16A1-SCA-M
PLC	1x2		1x4		1x8		1x16	
	UPC	APC	UPC	APC	UPC	APC	UPC	APC
	LSZH - , 0.9							
	1260-1650 nm							
, (dB)	4.1		7.7		10.7		13.9	
* (dB)	0.4		0.6		0.8		1	
(dB)	55							
(dB)	50	60	50	60	50	60	50	60
(PDL)	0.2		0.2		0.3		0.3	
(dB)	0.8							
	Corning SMF-28e G. 657.A1							
	1							
	-40 +80.		-40 +80		-40 +80		-40 +80	
	1							
	-							

* -

			-	,	,	-	,	,
NMF-SPP1X2A1-SCU-M	SC	UPC						
NMF-SPP1X2A1-SCA-M	SC	APC						
NMF-SPP1X4A1-SCU-M	SC	UPC						
NMF-SPP1X4A1-SCA-M	SC	APC						
NMF-SPP1X8A1-SCU-M	SC	UPC						
NMF-SPP1X8A1-SCA-M	SC	APC						
NMF-SPP1X16A1-SCU-M	SC	UPC						
NMF-SPP1X16A1-SCA-M	SC	APC						

